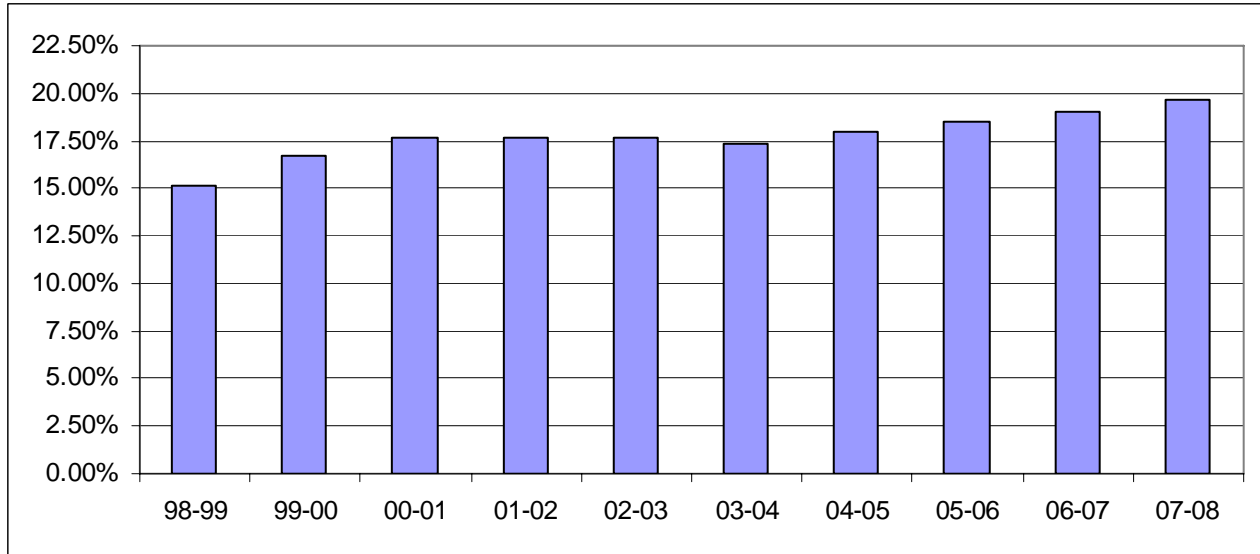


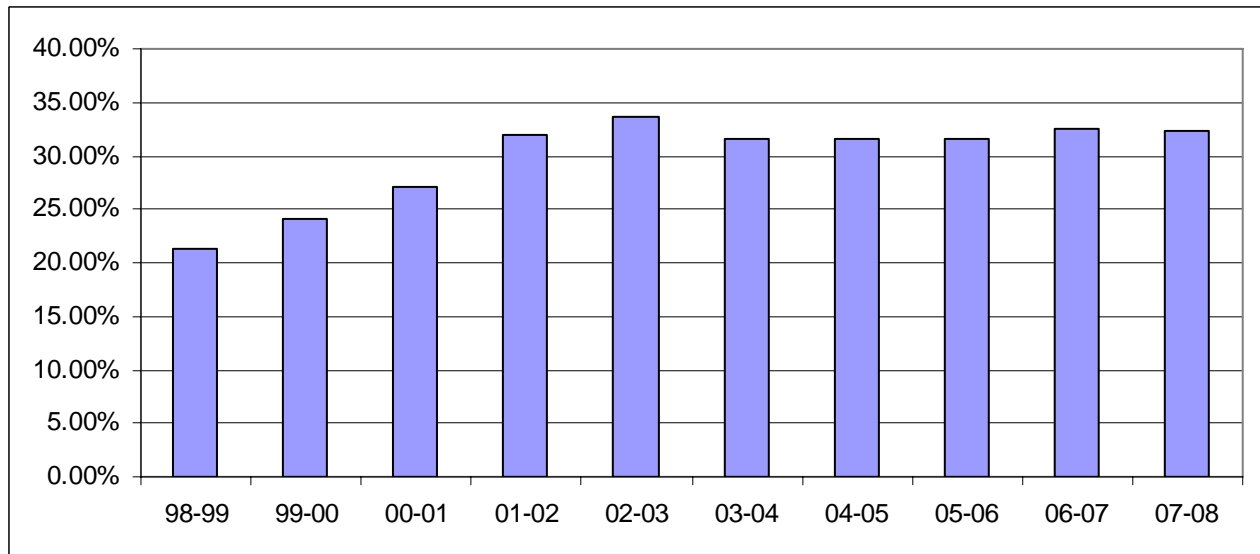
**Historical Enrollment of International Students at Harvard compared with total Enrollments**

<b>University Total</b>	<b>98-99</b>	<b>99-00</b>	<b>00-01</b>	<b>01-02</b>	<b>02-03</b>	<b>03-04</b>	<b>04-05</b>	<b>05-06</b>	<b>06-07</b>	<b>07-08</b>
International Students	2,818	3,099	3,330	3,448	3,459	3,402	3,546	3,669	3,821	3,913
Total Enrollments	18,569	18,541	18,847	19,539	19,536	19,638	19,731	19,779	20,042	19,923
% of Internationals	15.18%	16.71%	17.67%	17.65%	17.71%	17.32%	17.97%	18.55%	19.06%	19.64%

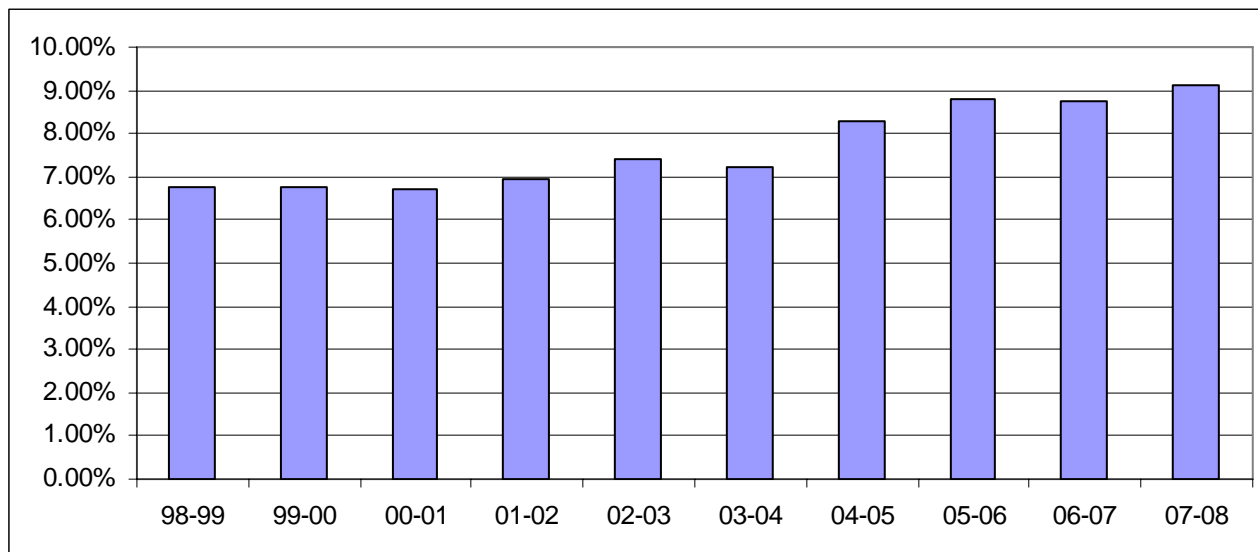


\*\*\*

<b>Business School</b>	<b>98-99</b>	<b>99-00</b>	<b>00-01</b>	<b>01-02</b>	<b>02-03</b>	<b>03-04</b>	<b>04-05</b>	<b>05-06</b>	<b>06-07</b>	<b>07-08</b>
International Students	389	430	488	591	618	580	576	584	602	598
Total Enrollments	1,829	1,786	1,799	1,847	1,836	1,832	1823	1851	1855	1854
% of Internationals	21.27%	24.08%	27.13%	32.00%	33.66%	31.66%	31.60%	31.55%	32.45%	32.25%

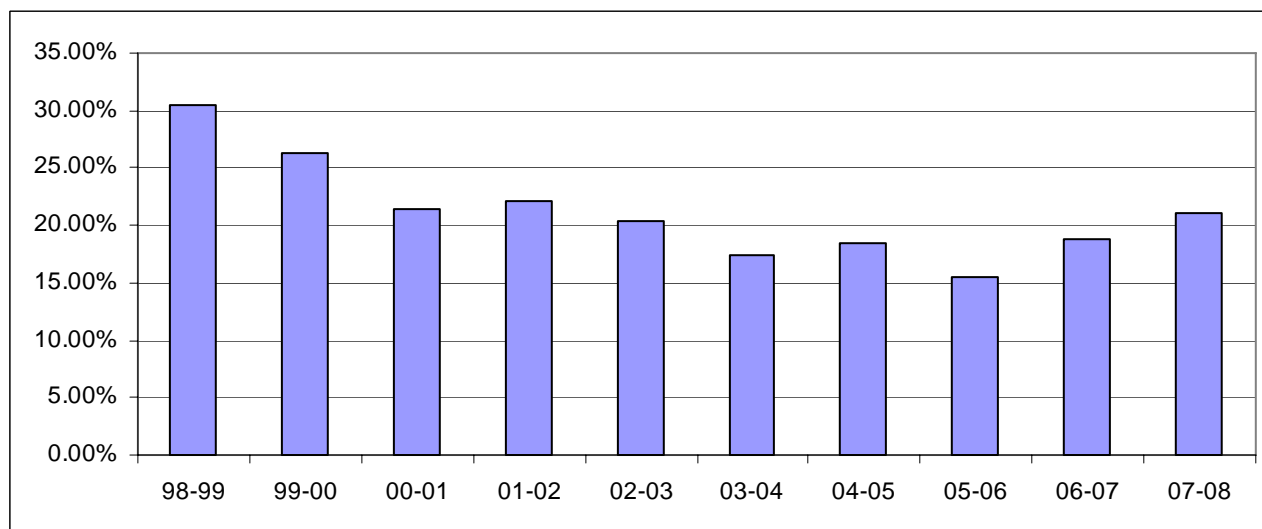


Harvard College	98-99	99-00	00-01	01-02	02-03	03-04	04-05	05-06	06-07	07-08
International Students	453	453	447	462	492	475	545	581	588	605
Total Enrollments	6,704	6,684	6,660	6,650	6,649	6,597	6,562	6,613	6,715	6,648
% of Internationals	6.76%	6.78%	6.71%	6.95%	7.40%	7.20%	8.31%	8.79%	8.76%	9.10%

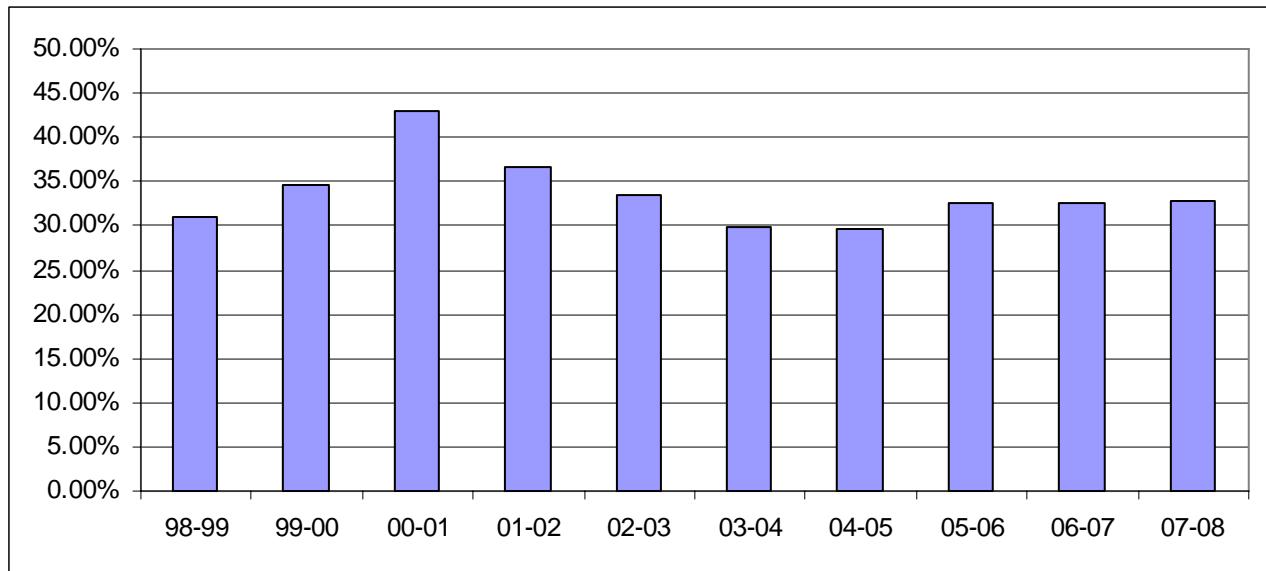


\*\*\*

Dental School	98-99	99-00	00-01	01-02	02-03	03-04	04-05	05-06	06-07	07-08
International Students	64	55	46	47	42	35	38	31	39	44
Total Enrollments	210	209	214	213	207	202	205	199	207	208
% of Internationals	30.48%	26.32%	21.50%	22.07%	20.29%	17.33%	18.54%	15.58%	18.84%	21.15%

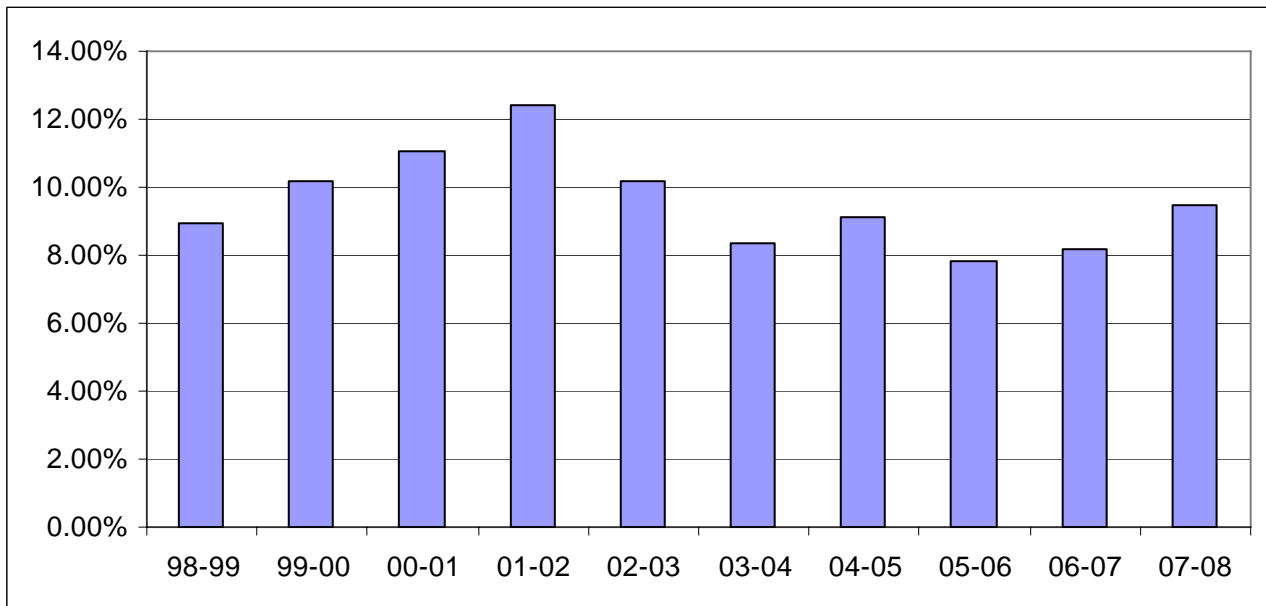


<b>Design School</b>	<b>98-99</b>	<b>99-00</b>	<b>00-01</b>	<b>01-02</b>	<b>02-03</b>	<b>03-04</b>	<b>04-05</b>	<b>05-06</b>	<b>06-07</b>	<b>07-08</b>
International Students	165	186	236	197	186	178	183	188	201	198
Total Enrollments	532	538	550	536	556	595	619	579	618	602
% of Internationals	31.02%	34.57%	42.91%	36.75%	33.45%	29.92%	29.56%	32.47%	32.52%	32.89%

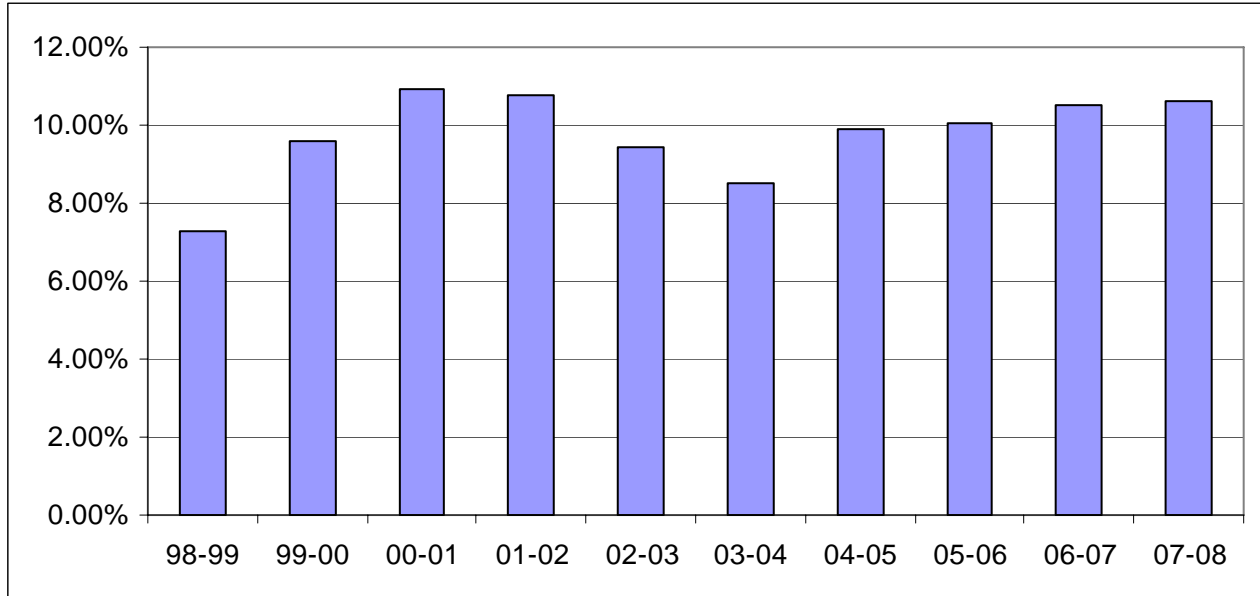


\*\*\*

<b>Divinity School</b>	<b>98-99</b>	<b>99-00</b>	<b>00-01</b>	<b>01-02</b>	<b>02-03</b>	<b>03-04</b>	<b>04-05</b>	<b>05-06</b>	<b>06-07</b>	<b>07-08</b>
International Students	46	49	53	56	45	38	39	33	36	43
Total Enrollments	513	481	480	451	443	455	428	423	439	453
% of Internationals	8.97%	10.19%	11.04%	12.42%	10.16%	8.35%	9.11%	7.80%	8.20%	9.49%

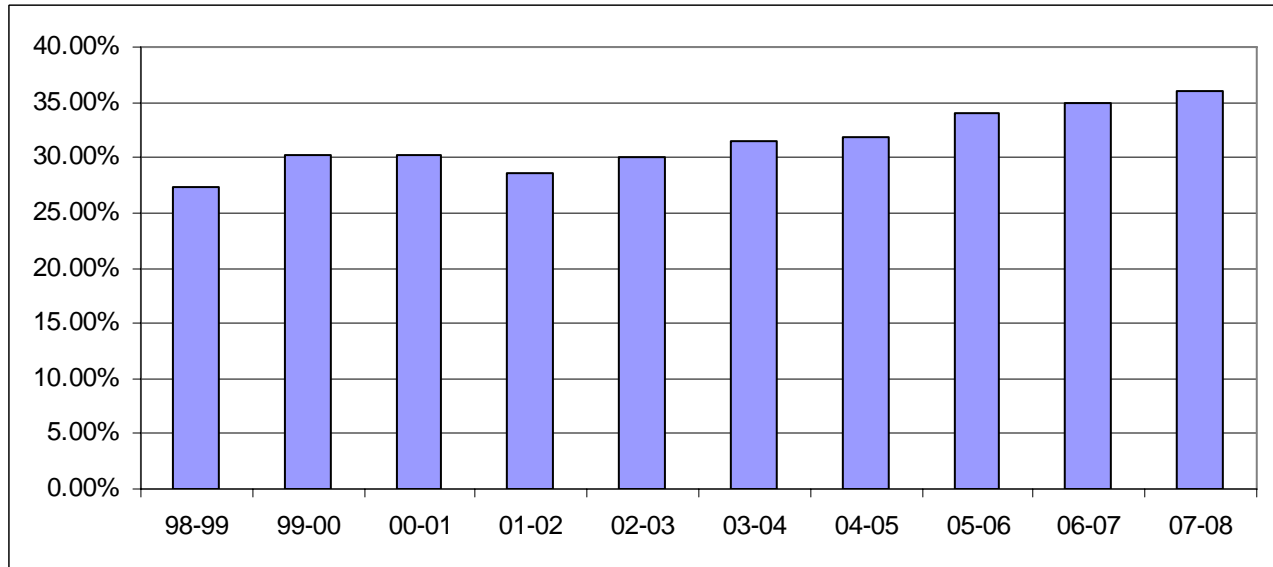


Education School	98-99	99-00	00-01	01-02	02-03	03-04	04-05	05-06	06-07	07-08
International Students	85	105	119	121	100	92	106	98	102	96
Total Enrollments	1,171	1,096	1,087	1,121	1,057	1,080	1,069	975	971	905
% of Internationals	7.26%	9.58%	10.95%	10.79%	9.46%	8.52%	9.92%	10.05%	10.50%	10.61%

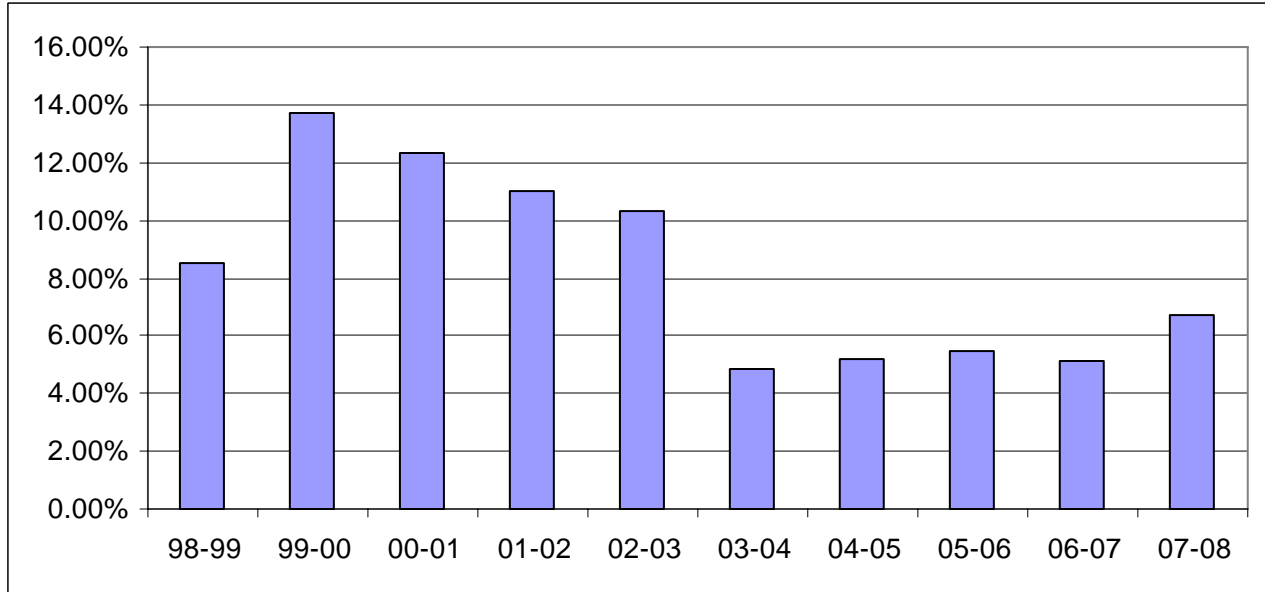


\*\*\*

GSAS	98-99	99-00	00-01	01-02	02-03	03-04	04-05	05-06	06-07	07-08
International Students	801	900	953	958	1,006	1,105	1,160	1,280	1,311	1,325
Total Enrollments	2,926	2,979	3,144	3,358	3,357	3,510	3,638	3,753	3,750	3,682
% of Internationals	27.38%	30.21%	30.31%	28.53%	29.97%	31.48%	31.89%	34.11%	34.96%	35.99%

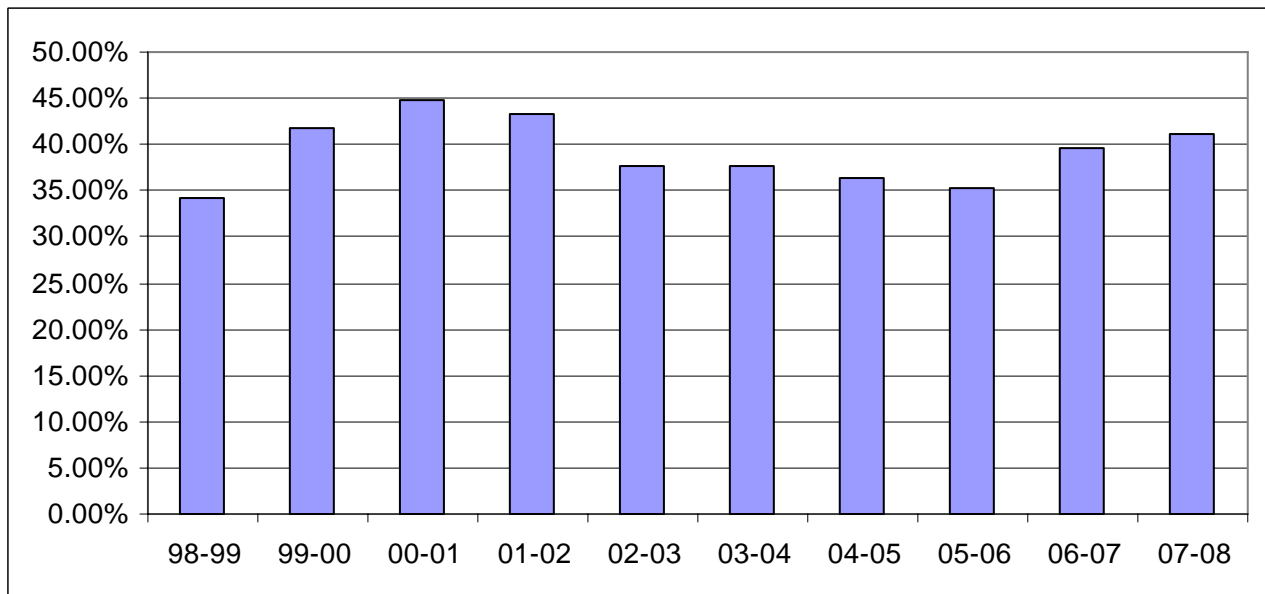


<b>Extension School</b>	<b>98-99</b>	<b>99-00</b>	<b>00-01</b>	<b>01-02</b>	<b>02-03</b>	<b>03-04</b>	<b>04-05</b>	<b>05-06</b>	<b>06-07</b>	<b>07-08</b>
International Students	82	136	132	117	111	52	51	54	50	76
Total Enrollments	964	992	1,068	1,061	1,072	1,079	977	988	975	1,133
% of Internationals	8.51%	13.71%	12.36%	11.03%	10.35%	4.82%	5.22%	5.47%	5.13%	6.71%

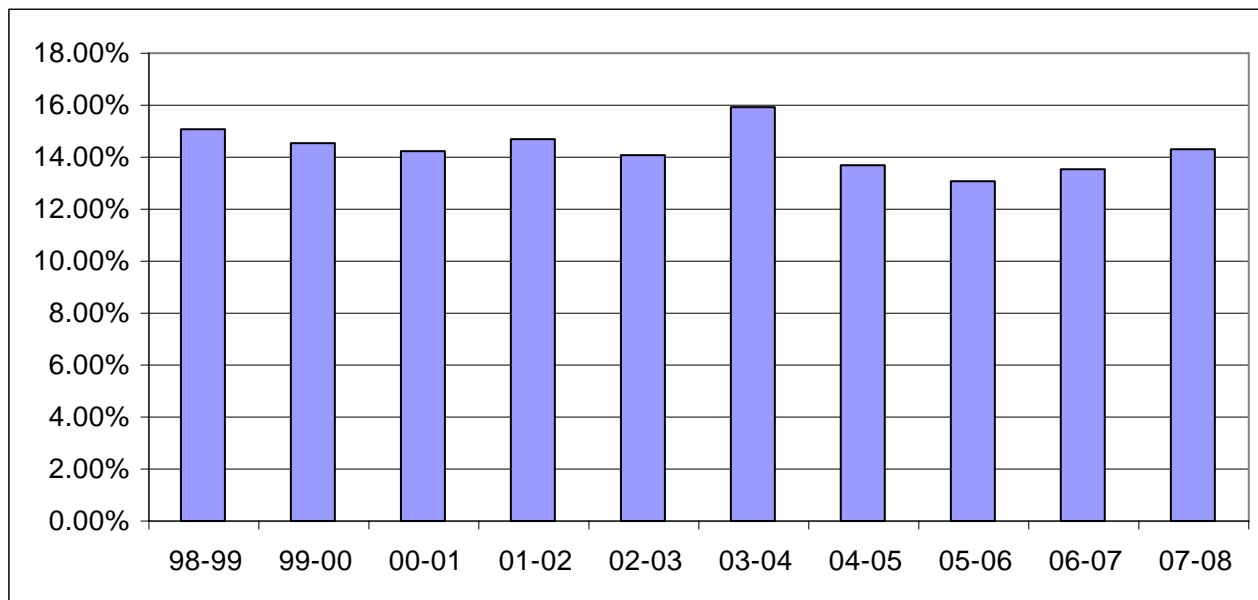


\*\*\*

<b>KSG</b>	<b>98-99</b>	<b>99-00</b>	<b>00-01</b>	<b>01-02</b>	<b>02-03</b>	<b>03-04</b>	<b>04-05</b>	<b>05-06</b>	<b>06-07</b>	<b>07-08</b>
International Students	249	322	376	382	338	348	347	334	407	382
Total Enrollments	728	770	840	881	896	924	956	944	1,029	930
% of Internationals	34.20%	41.82%	44.76%	43.36%	37.72%	37.66%	36.30%	35.38%	39.55%	41.08%

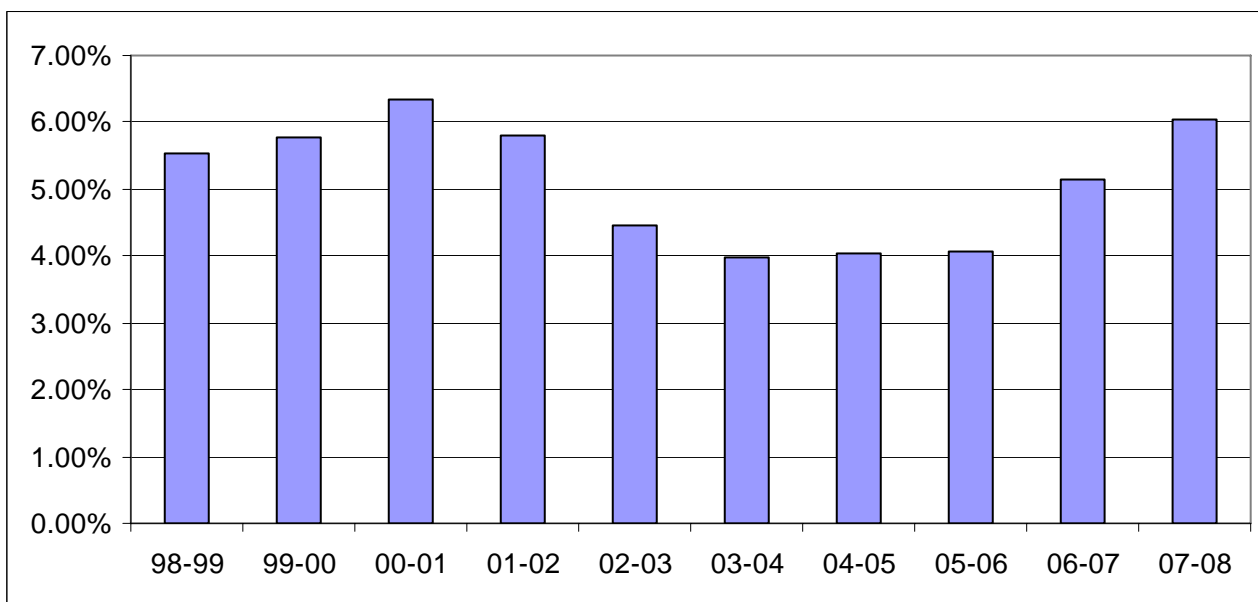


<b>Law School</b>	<b>98-99</b>	<b>99-00</b>	<b>00-01</b>	<b>01-02</b>	<b>02-03</b>	<b>03-04</b>	<b>04-05</b>	<b>05-06</b>	<b>06-07</b>	<b>07-08</b>
International Students	280	270	261	281	269	302	263	254	266	281
Total Enrollments	1,861	1,860	1,838	1,914	1,915	1,899	1,921	1,948	1,966	1,966
% of Internationals	15.05%	14.52%	14.20%	14.68%	14.05%	15.90%	13.69%	13.04%	13.53%	14.29%



\*\*\*

<b>Medical School</b>	<b>98-99</b>	<b>99-00</b>	<b>00-01</b>	<b>01-02</b>	<b>02-03</b>	<b>03-04</b>	<b>04-05</b>	<b>05-06</b>	<b>06-07</b>	<b>07-08</b>
International Students	42	43	48	45	35	31	31	32	42	49
Total Enrollments	757	744	756	777	787	780	766	784	818	809
% of Internationals	5.55%	5.78%	6.35%	5.79%	4.45%	3.97%	4.05%	4.08%	5.13%	6.06%



Public Health School	98-99	99-00	00-01	01-02	02-03	03-04	04-05	05-06	06-07	07-08
International Students	162	150	171	186	217	166	207	200	177	216
Total Enrollments	756	760	823	808	825	737	825	787	771	797
% of Internationals	21.43%	19.74%	20.78%	23.02%	26.30%	22.52%	25.09%	25.41%	22.96%	27.10%

